

Crow Wing SWCD 2024 Annual Report



Photo Courtesy of Sami Rice

2024 Conservation Report



Table of Contents

Elected Citizen-Led Board.....	2
Conservation Funding	3
Site Visits.....	4
Completed Projects	5
Completed Easements	6
Forestry Plans & BMPs	7
Pollution Reduction Estimates.....	8
Tree Sale	9
Brainerd Gully Project.....	10
Nitrate Testing.....	11
Water Quality Monitoring	12
Conservationist of the Year	13
Outstanding Forest Steward.....	14
County Partnership.....	15
2024 Bus Tour	16
Office Snapshots	17
Conservation Partners.....	18

Vision: Clean water, productive lands, and vibrant communities.

Mission: Fostering healthy lands and clean water through voluntary conservation.






Values: Stewardship, Support, Integrity, Leadership, and Partnerships.

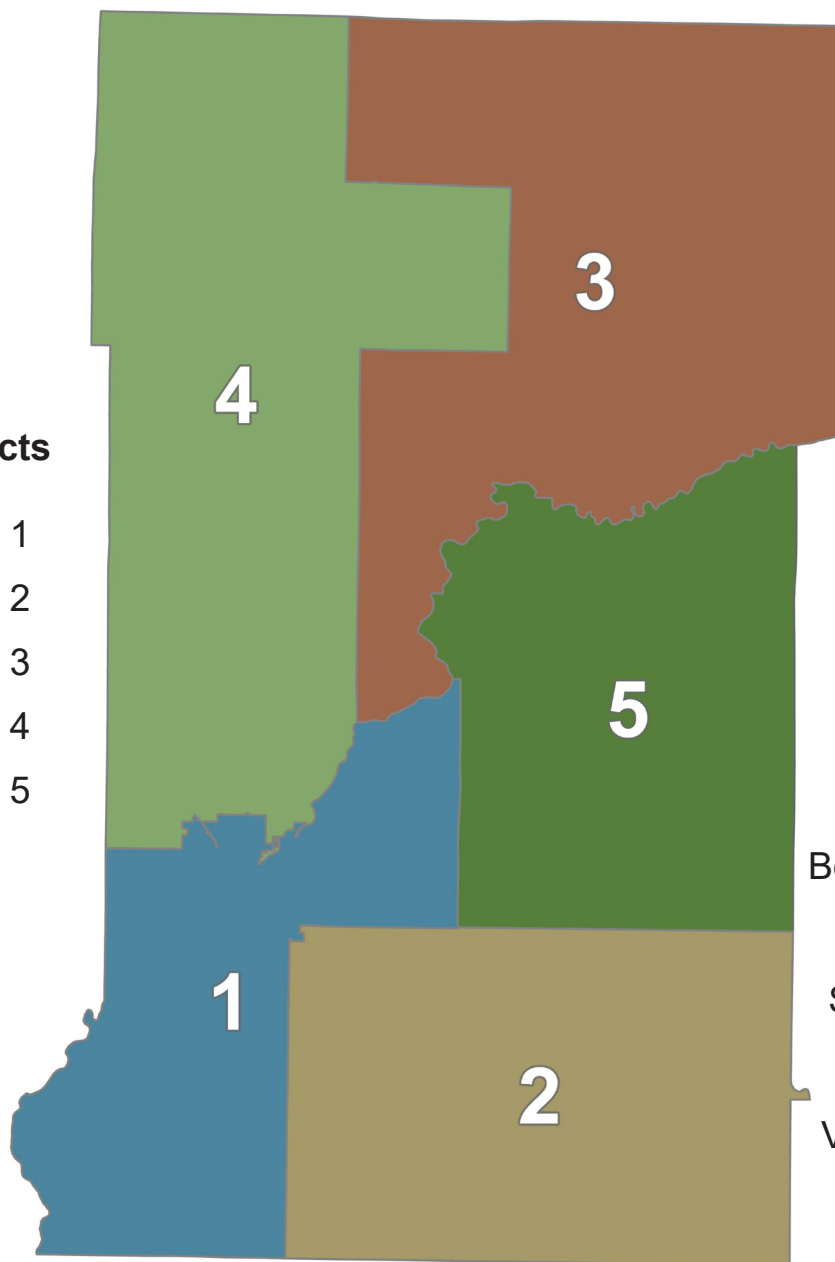
Elected Citizen-Led Board



Supervisor District Map

SWCD Districts

-  District 1
-  District 2
-  District 3
-  District 4
-  District 5



Crow Wing SWCD Board of Supervisors

Jim Chamberlin
Board Chair, District 5

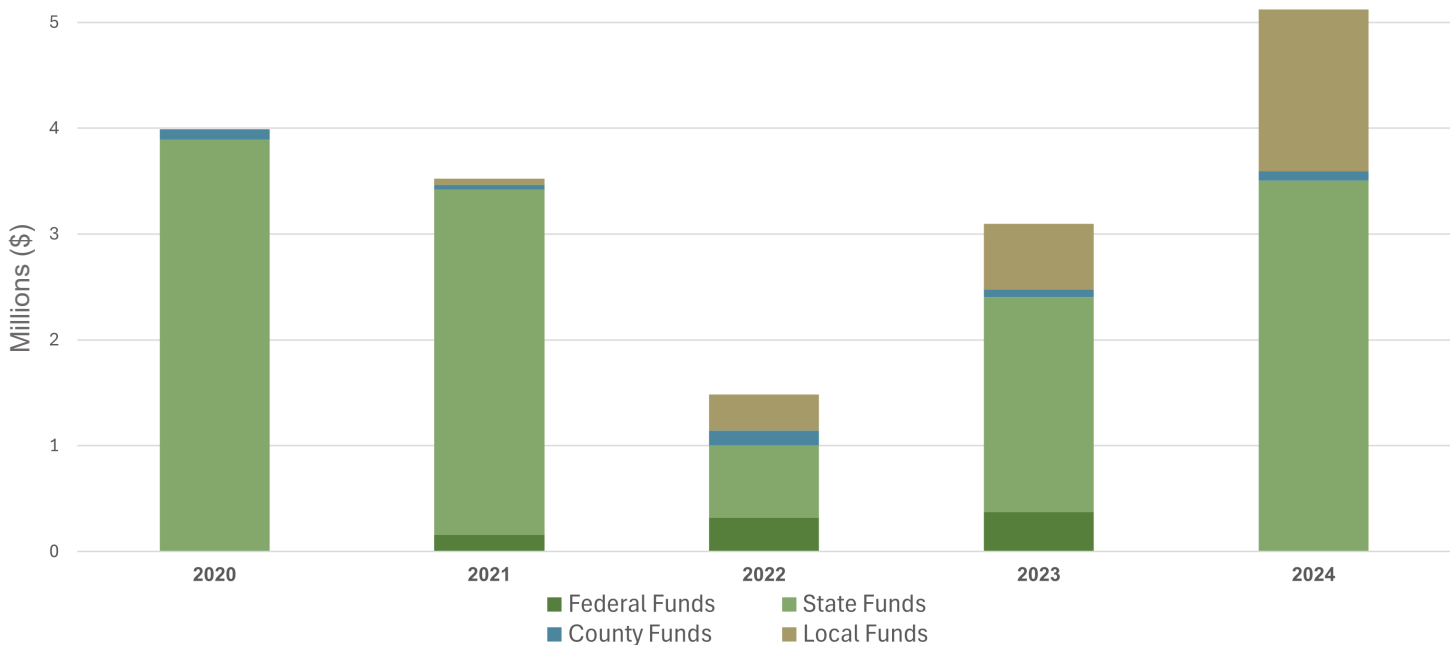
JoAnn Weaver
Secretary, District 4

Roger Waytashek
Vice-Chair, District 3

Diane Jacobson
Reporter, District 2

Leonard Koering
Treasurer, District 1

Conservation Funding



2024 = \$5.12 Million for Conservation

County Funds

Fee for Service	\$7,500
In-Kind Contribution	\$71,187
Lake Monitoring	\$4,234
Wetland Conservation Act	\$7,800
Total	\$90,721

Local Funds

Landowner Match*	\$98,142
Arboretum Prairie Project	\$10,267
City of Baxter Whiskey Creek Project	\$1,417,000
Total	\$1,525,409

State Funds

SWCD Government Aid	\$173,819
Soil Health Staffing Grant	\$408,600
LSOHC** Pine and Leech Easement Grant	\$2,242,000
Watershed Based Implementation Funding	\$531,434
Other BWSR*** Funds	\$60,750
Total	\$3,504,214

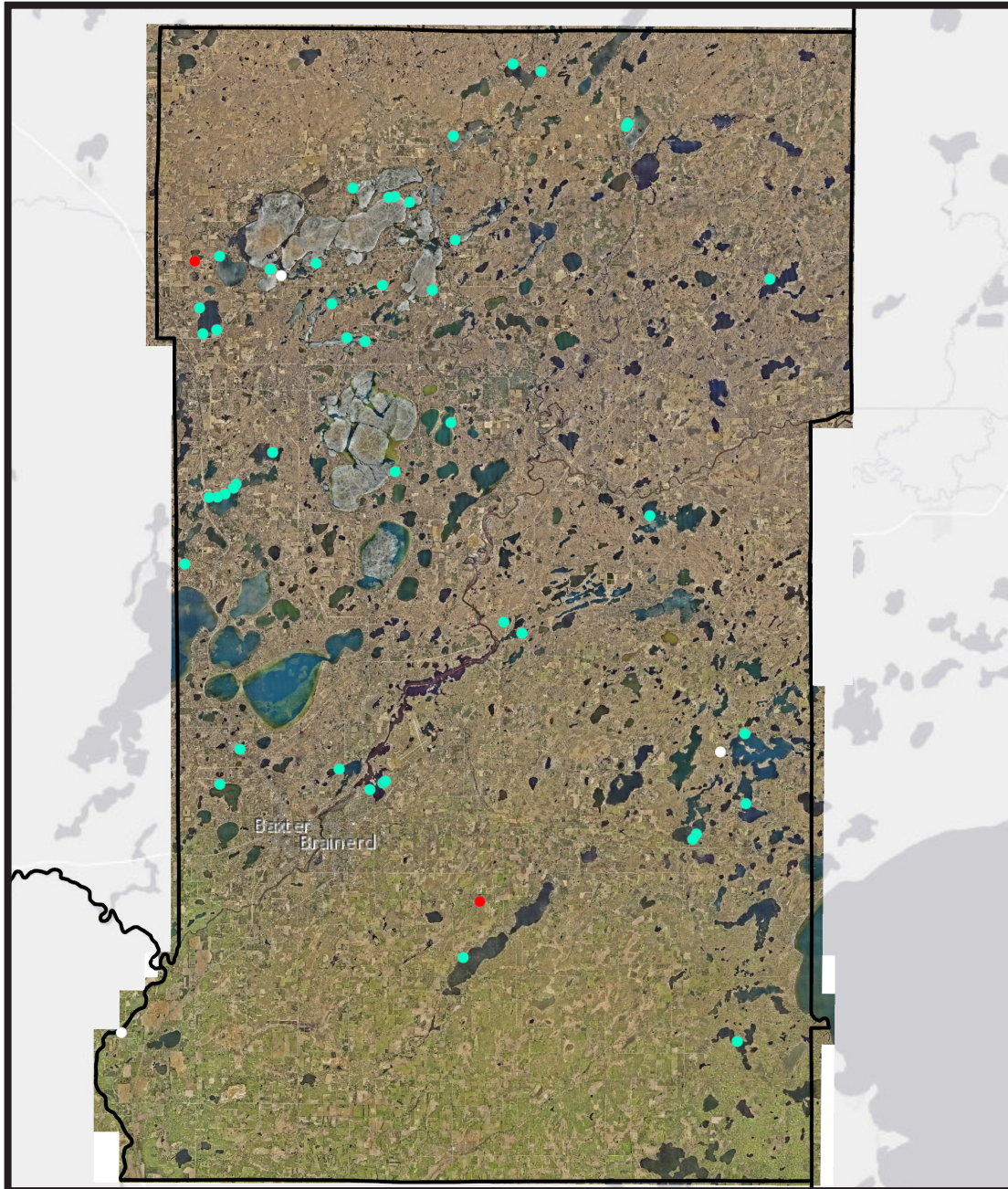
*Landowner contributions are counted once the SWCD has paid the landowner in a given year

**Lessard-Sams Outdoor Heritage Council

***Board of Water and Soil Resources



Site Visits

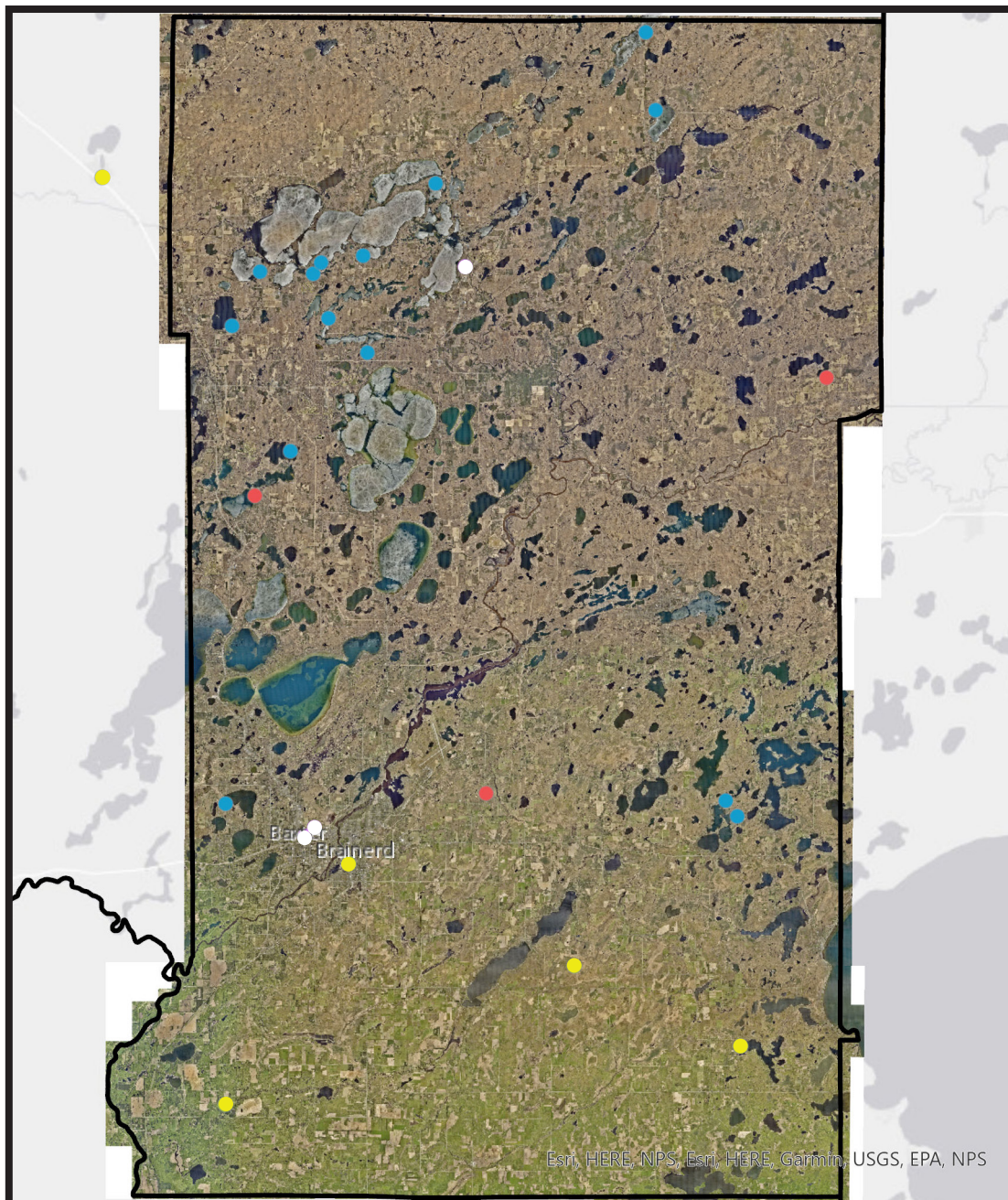


- 57 Total Site Visits
- 52 Shoreline Visits (Including Stormwater)
- 2 Agricultural Visits
- 3 Forestry Visits

Legend

- Shoreline/Stormwater
- Agriculture
- Forestry

Completed Projects



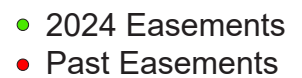
- 28 Total Projects
- 15 Shoreline Projects
- 3 Pollinator/Stormwater Projects
- 4 Agriculture Projects
- 6 Forestry Projects

Legend

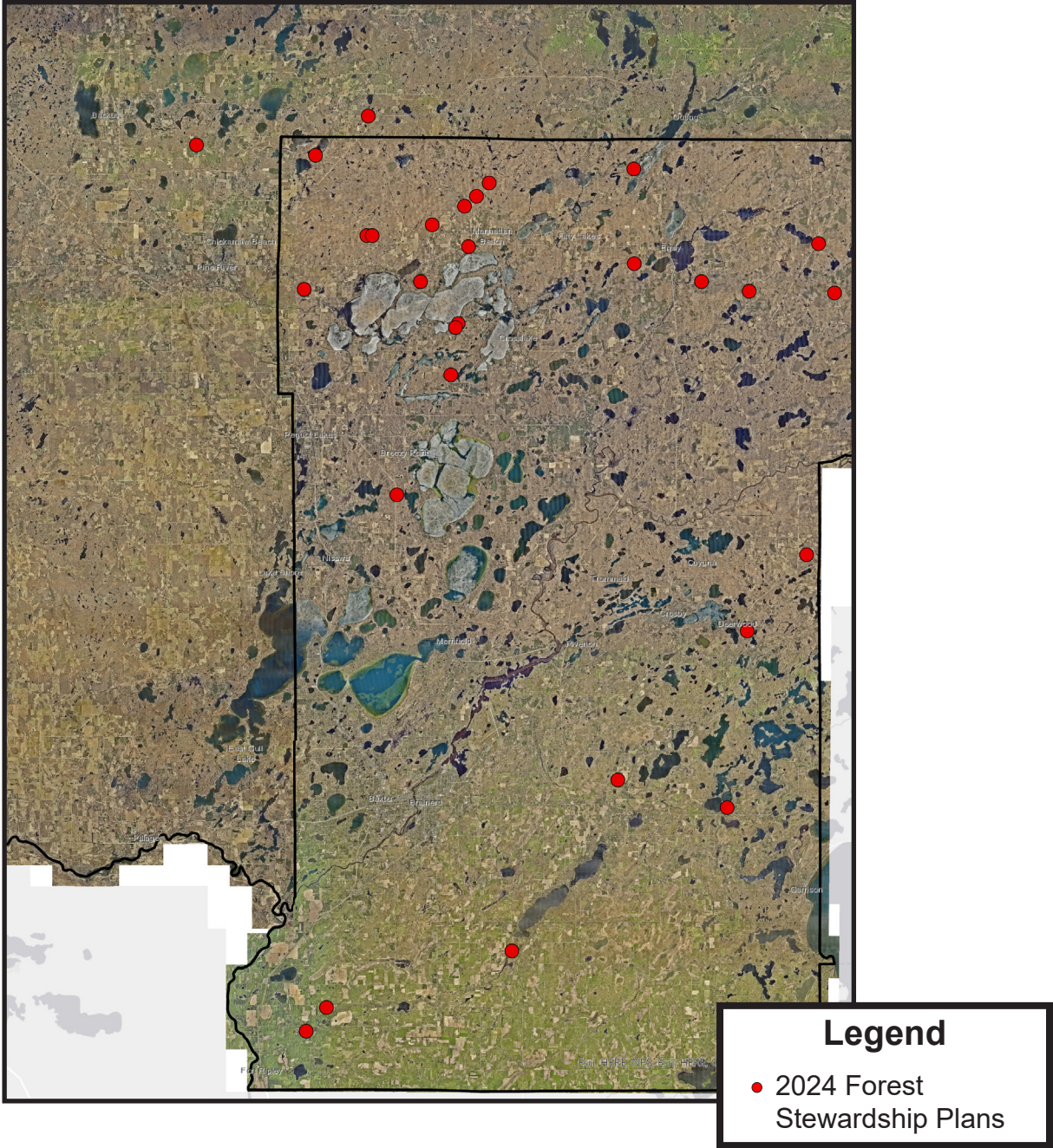
- Shoreline
- Pollinator/Stormwater
- Forestry
- Agriculture



Crow Wing
SOIL & WATER
CONSERVATION DISTRICT

6

Forest Stewardship Plans



	Forest Stewardship Plans	Acres
2024	39	3,866
Total Since 2010	175	20,934

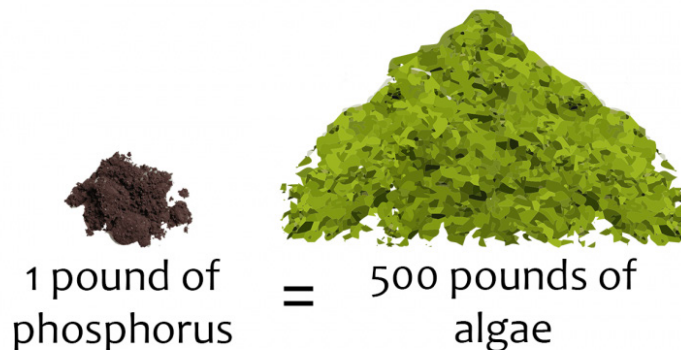
Pollution Reduction Estimates



Our Projects Installed in 2024 Will:

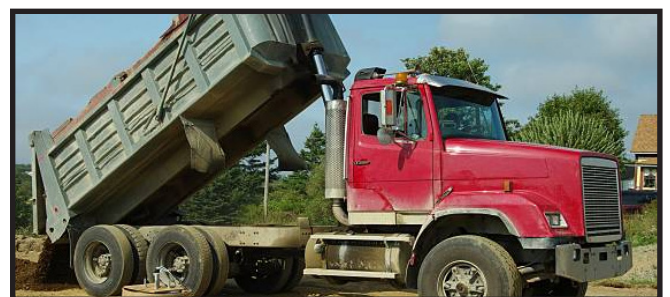
- Prevent 256.4 tons of sediment from entering waterways each year
- Produce 6.3 tons of soil savings each year
- Prevent 259.3 pounds of phosphorus from reaching lakes, rivers and streams every year

Phosphorus is the limiting nutrient in most lakes in Crow Wing County. By reducing the amount of phosphorus getting into waterbodies, we can reduce algae growth.



That means **129,650 pounds** of algae will be prevented from forming in our waterways every year.

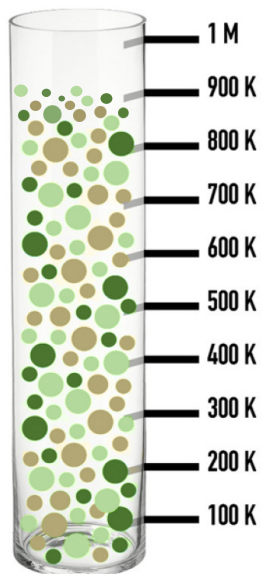
That weighs the same as 59 pontoons!
That much algae would fill 10 average-sized dumptrucks!



Tree Sale



26,750 Trees Planted!

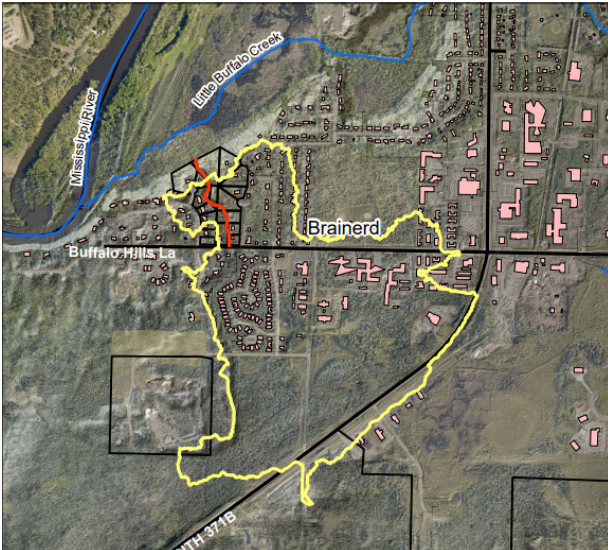


924,877 Trees Planted
Since 1999

Congratulations to our Photo Contest
Winner, Ken Rynda!



Brainerd Gully Project



- Prevents 250 pounds of phosphorus from entering the Mississippi River each year.
- Prevents 250 tons of sediment from entering the Mississippi River each year.
- Funded by ~\$945,000 Clean Water Fund grant from the Board of Water and Soil Resources with an additional \$240,000 match from the City of Brainerd.

Legend

- | | |
|-------------|-------------|
| — Gully | — Roads |
| — Watershed | ■ Buildings |
| — Rivers | □ Parcels |

Issue:

- A culvert was installed in 1985 to help drain a road owned by the city.
- Development in the area created more impervious surfaces such as roads and roofs, so the quantity of water flowing through the culvert increased.
- The increased flow caused the sugar sand to become unstable and begin washing into Little Buffalo Creek which feeds into the Mississippi River.
- The erosion became so significant that it was threatening the stability of adjacent structures, including homes.

Solution:

- 1,300 Linear feet of reinforced concrete pipes were installed along the bottom of the channel and buried to prevent further erosion.
- The pipes guide the water to a deposition pool where the sediment has time to settle and infiltrate before flowing into Little Buffalo Creek.
- Erosion control fabric and native seed mixes were installed along the slopes to stabilize them and reduce future erosion.

Before



After



Nitrate Testing



- 1 Nitrate Clinic Hosted in Garrison
- 1 Nitrate Clinic Hosted in Crosslake
- 1 Nitrate Clinic Hosted in Brainerd
- 127 Samples Taken

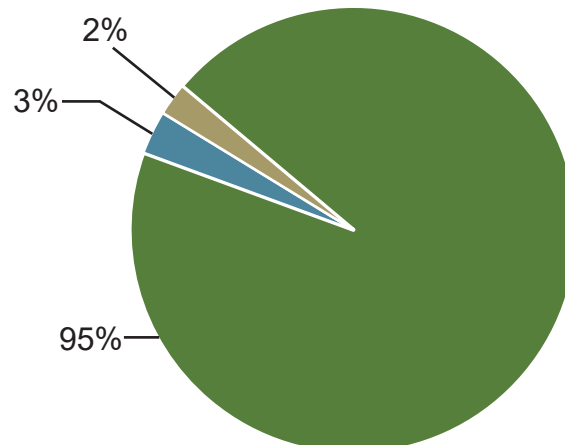
Legend

● Well Locations

Legend

- 0-4.9 mg/L (Safe)
- 4.9-9.9 mg/L (Safe)
- 10 mg/L and Up (Unsafe)

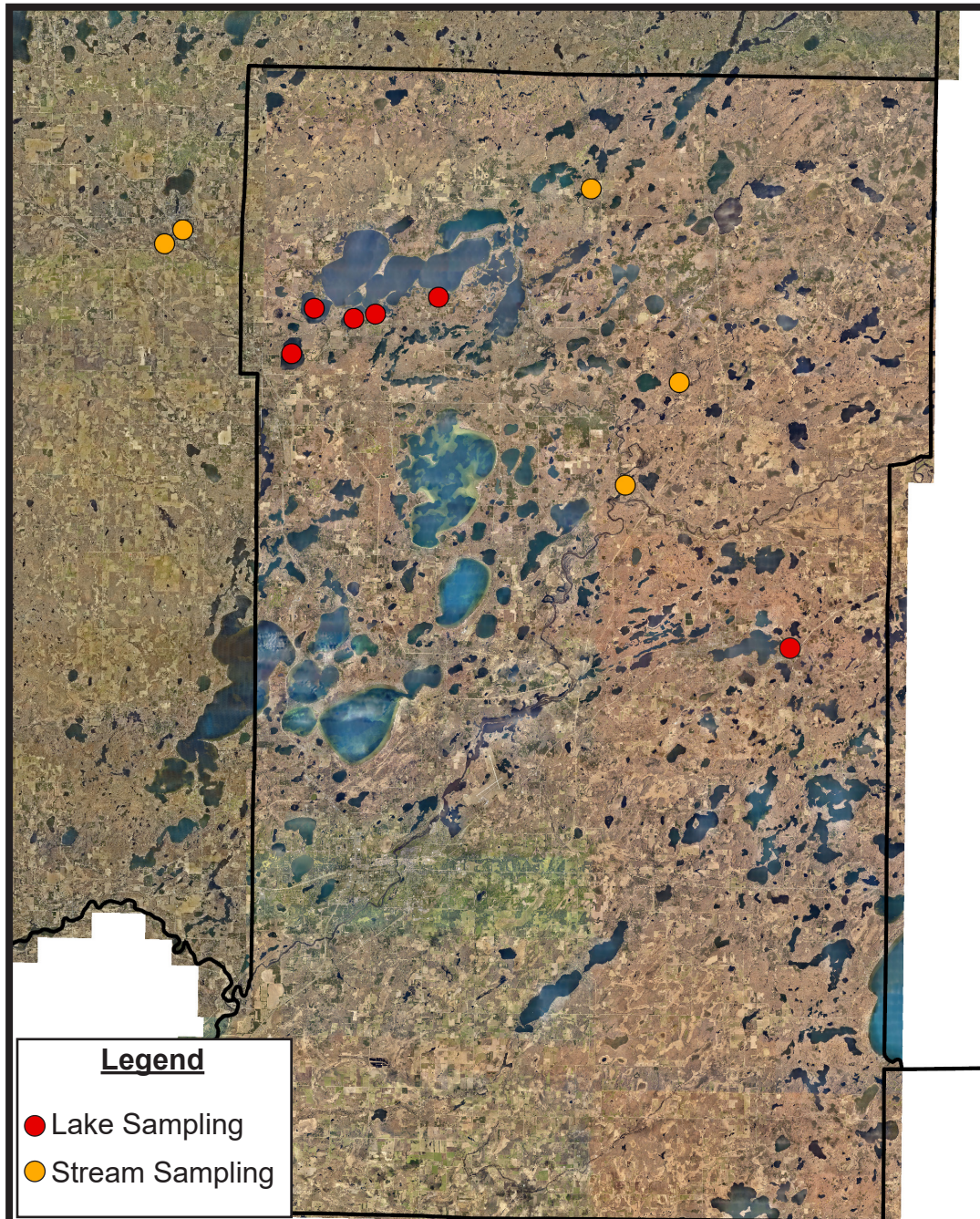
Nitrate Test Results



Water Quality Monitoring



Made possible by our wonderful partners and volunteers!



- 67 Samples Taken
- 8 Testing Parameters Collected for Lakes
- 11 Testing Parameters Collected for Streams



Conservationist of the Year



Thank you, Stattelman Family!



Thomas and Cyriana Stattelman were named North Central Minnesota's Outstanding Conservationists. Their accomplishments include:

- Working to improve nutrient cycling on their ranch to improve long term soil health and productivity
- Expanding soil health practices onto rented land
- Adopting rotational grazing for their herd of cattle

Outstanding Forest Steward



Thank you, Rick Nolan!

The late Rick Nolan won Crow Wing County's Outstanding Forest Steward Award. Throughout the years, Rick:

- Planted more than 150,000 trees in Crow Wing County
- Fought for natural resources at local, state and federal levels
- Worked to improve native vegetation along waterbodies that produce wild rice



County Partnership



The SWCD and Crow Wing County have collaborated on a range of natural resources, enhancing water quality and promoting sustainable land use practices. Some highlights from 2024:

- Performed water monitoring and measurement of water quality data by administering the Thirty Lakes Watershed District Citizen Lakes monitoring program and Crow Wing County Highway Department chloride monitoring program (Actions 1-3).
- Hosted free nitrate testing to ensure clean drinking water for county residents on well water (Groundwater Objective 2).
- Continued partnership with the Crow Wing County Highway Department and the City of Crosslake to improve stormwater management on CSAH 66.
- The County has supported the creation and implementation of comprehensive watershed plans for the Crow Wing River, Pine River and Mississippi River-Brainerd watersheds.
- The SWCD has helped the County implement measures to address the water plan objectives related to source water through installation of shoreline buffers, stormwater plans and agricultural best management practices.
- Collaborated on a bus tour of SWCD and County projects, including improvements made to County waste disposal and the expansion of Milford Mine Memorial Park (Groundwater Objective 5).

Objectives and action relate to the Crow Wing County Water Plan which can be found at crowwing.gov



2024 Bus Tour



The SWCD and County invited both the general public and elected officials on a bus tour showcasing major conservation projects that were recently implemented in Crow Wing County!



Whiskey Creek Stormwater Treatment Facility

- 400 acres drain to this location.
- 13.79 acres of vegetated wetland was installed.
- Stops 142 pounds of phosphorus and 31 tons of sediment from flowing into the Mississippi River each year.



Rotary Park Buckthorn Management

- Buckthorn was taking over the understory in a public park.
- To help manage its proliferation, 75 goats were brought in Brainerd's Rotary Park to graze the land.



Brainerd Gully Remediation (More Info on Page 10)

- 1,300 linear feet of concrete pipe was installed to guide the water to a settlement basin and the edges were smoothed and planted to prevent further erosion.



Crow Wing County Recycling Center

- The County has improved its recycling facility and their processes to be able to recycle a wider range of items.
- The facility can recycle hazardous materials, oil, antifreeze, batteries, mattresses, electronics, tires and major appliances.



Milford Mine Memorial Park

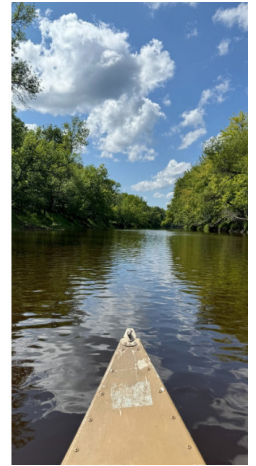
- The County has recently added an additional 1.25 miles of trails to the historic park.
- A 1,000-foot boardwalk and two picnic pavilions were also added.



Mississippi River

- The Crow Wing Mississippi River Complex plays an important role in providing habitat for a wide range of animals.
- This complex protects more than 9 miles of streambank on the Mississippi River and 1,672 acres of upland habitat.

Office Snapshots



Conservation Partners



Sen. Eichorn



Rep. Heintzeman



Rep. Davis

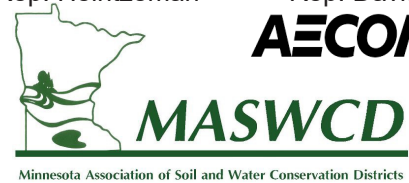




Photo Courtesy of Samantha Rice

Contact Us!

Phone: 218-828-6197
Website: www.cswcd.org

**Address: 322 Laurel Street, Suite 22,
Brainerd, MN 56401**